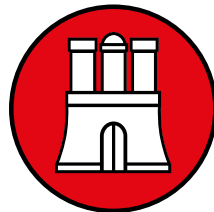


Pallas



— HAMBURG —

PALLAS ZELOS
SEMI AUTO SHOTGUN
INSTRUCTION MANUAL

**Read this manual carefully
before using the firearm.**

FIREARMS SAFETY

At Pallas we believe that safe firearms handling is the most important consideration of anyone who uses firearms and ammunition. Please take a few minutes to thoroughly read and understand this instruction manual.

Many makes and models of firearms may LOOK very similar. However, they differ widely in design and operation, and in the location and function of various controls.

You should completely understand this manual before loading, unloading and firing with live ammunition.

Remember, firearms safety does depend on you!

Serial No.

Date Purchased:

Purchased From:

THIS MANUAL CONTAINS

I. GENERAL SAFETY WARNINGS

General safety warnings, which should be read and understood before using this firearm.

II. OPERATION INSTRUCTIONS

Directions and procedures for handling, loading, firing and unloading.

III. MAINTENANCE AND CLEANING

Instructions for care, cleaning, repair and service of this shotgun.

This instruction and safety manual is designed to help you learning how to properly use and take care of your Pallas shotgun. Only when you are certain you have familiarized yourself with the function of your firearm you should practice loading, unloading and firing live rounds of ammunition.

This instruction manual should always accompany this firearm and be transferred with it upon change of ownership.

Safe gun handling is your personal responsibility at all times.

DISCLAIMER OF LIABILITY

Pallas shall not be responsible for product malfunctioning or physical injury, death or damage to property resulting from either intentional or accidental discharge of this firearm, it criminal or negligent use, improper or careless handling, unauthorized modifications or alteration, use of defective or improper or hand-loaded or replaced ammunition, or from its use for purposes or subjection to treatment for which it is not designed.

For your safety, use only original high quality commercially manufactured ammunition in good condition that is appropriate to the caliber/gauge of your gun.

Pallas shall not be responsible for product or its result from use of defective, improper or reloaded ammunition.

WARNING – LEAD EXPOSURE

Discharging firearms in poorly ventilated areas, cleaning firearms or handling ammunition may result in exposure to lead and other substances that may cause birth defect, reproductive harm and other serious physical injury. Have adequate ventilation at all times. Wash your hands thoroughly after exposure. Shooting or cleaning guns may expose you to lead.

WARNING: Prior to removing this gun from its packaging, and prior to loading and firing, carefully and thoroughly read the entire instruction manual which gives advice on the gun's proper handling and functioning. However, your safety and that of others depends on your responsible compliance with that advice. If unfamiliar with firearms seek supervised instruction.

Firearms safety is your responsibility !

I. GENERAL SAFETY WARNINGS

1. Careless and improper handling of this gun could result in unintended discharge causing injury, death or damage to property. Safety must be the first and constant consideration when handling a firearm and ammunition.
2. This shotgun was designed to function properly in its original condition. Alterations can make it unsafe. Do not alter any part or add or replace parts.
3. Shotguns should only be carried with the action open and chamber empty to prevent accidental discharge.
4. **Always handle and treat your gun as if it were loaded** so you never fire it accidentally. Never take anyone's word it is unloaded. Always check it yourself with your fingers off the trigger and the gun pointed in a safe direction.
5. Never place your finger inside the trigger guard unless you intend to fire.
6. Water, snow, mud, excessive lubricating oil or grease or any other material can obstruct the barre! of your gun. Always check the barrel of your firearm for obstruction before loading and firing. Clean a fouled gun immediately to ensure its correct and safe function.
7. **Keep the gun's muzzle pointed in a safe direction at all times.** Never let the muzzle of a firearm point at any part of our body, another person or at anything you do not intend to shoot. Always be certain of your target before firing.
8. Use only high quality ammunition specifically designed for your gauge of shotgun. The barre! is marked with the size of shotshell it will accept. If the barre! is marked "3" it will accept 3 inch and 2 3/4 inch shotshells. **Never load the chamber with a shell that is longer than the chamber is marked.**



The orange color part between the forend and the receiver is packaging purpose only!

Not use when assembling !

9. **Unload all firearms when not in use. Never store a loaded firearm.** Firearms and ammunition should be safely stored separately so that they are inaccessible to children or unauthorized users.
10. Always make sure your gun is unloaded before cleaning, storing or handing it to another person.
11. Always wear safety glasses while shooting to protect your eyes from injury by gun powder, gas, lubricant, dirt or metallic particles, carbon residue, sparks or other debris.
12. Always wear ear protection when shooting, especially on a range. Without ear protection, the noise from your gun, and other guns close to you, could leave a "ringing" in the ears for some time after firing. Repeated exposure to shooting noise could result in permanent hearing loss.
13. Never climb a tree, fence or wall while carrying a loaded firearm. Remove ammunition and hand the gun to someone else or place it on the ground on the other side of the obstacle before crossing it yourself. **DO NOT** lean a gun against a tree or other obstacle; it could fall and possibly discharge.
14. **DO NOT** shoot at a hard surface or at water. Bullets and shot can ricochet or bounce off and travel in unpredictable directions with great velocity.
15. Firearms and alcohol **DO NOT** mix. Never drink alcoholic beverages or take drugs before or during shooting, as this constitutes criminal disregard for your safety and that of others. Never use a gun while you are taking medication unless you have checked with your doctor to ensure your fitness to handle your gun safely.
16. If you have any doubts about your ability to handle or use this shotgun safely, seek supervised instruction.
17. **Remember, safety is your responsibility, be a safe shooter !**
18. **FOLLOW THE LAW:** Obey all local, state and federal laws regarding storage, shooting and transporting your firearm.

II. OPERATION INSTRUCTIONS

OPERATING SYSTEM

The Pallas operating system is based on the basic principle of inertia utilizing the kinetic energy created by the projection of the fired cartridge within an unvented barrel. The system requires no outlet for gas or barrel recoil, but operates by means of a spring that is freely interposed between the bolt head and the bolt.

ASSEMBLY

Mounting the forend and the barrel to the receiver. Make sure the barrel is clean and free of heavy lubrication. Remove the forend by unscrewing the forend nut. Slide the forend off the magazine tube.

Assemble the forend on to the barrels underside by inserting front part of the forend to the barrel's lug. Now the barrel is ready to assemble to the receiver.

While the barrel is ready to assemble, slide the forend into the magazine tube and fit it properly to the receiver. Make sure that the forend is fitted with the forend latch correctly. Screw the forend nut on to the front of the magazine tube, finger tight. Close the bolt by pressing the carrier latch button.

MANUAL TRIGGER SAFETY

Before loading the gun, manual trigger safety is on. To activate the manual trigger safety, press the manual safety button on the side of the trigger guard from the left side of the gun to the right. When the trigger safety is "on", the black button will protrude from the left side of the trigger guard, and the red band around the button will be visible.

The manual safety trigger is related only to lock the trigger. It's not suitable for safe gun handling.

LOADING

Put the manual safety "on" [Fig. 1]. Pull the trigger guard latch button and make sure there is no shell dropping on the carrier [Fig. 2]. Push the carrier latch button and release the bolt forward as into close position [Fig. 3]. Load cartridges by sliding them forward into the magazine tube, thanks to our easy loading feature depressing the cartridge carrier as you do so [Fig. 4].

After loading the magazine tube pull the trigger guard latch button, the cartridge will drop on the carrier. In order to move a cartridge from carrier to the chamber, pull the bolt handle fully to the back and release it [Fig. 5]. The magazine tube holds 2 cartridges when the magazine plug is installed. The magazine tube holds five pieces 3" magnum or four pieces when the plug has been removed.

To load an additional cartridge, load one cartridge to the chamber, and then load other cartridges to the magazine tube, and pull the trigger guard latch button [Fig. 5] to drop the cartridge from magazine tube to the carrier. When you are ready to fire, put the manual trigger safety in to the "off" position. The gun now is ready to fire.



UNLOADING

Fired cartridges will be ejected automatically. To unload the unfired cartridges from the gun, first of all be sure that the safety button is in the "on" position [Fig. 6]. Never permit your finger or another object to come in contact with the trigger while unloading.



Pull the bolt handle to the rear to eject any cartridge in the chamber. If there is a cartridge in the chamber and a cartridge on the carrier, this will also load the cartridge from the carrier, pull and release the bolt handle again.

If a cartridge remains in the magazine tube, pull the trigger guard latch button to place the cartridge onto the carrier. Pull and release the bolt handle again to load that cartridge to the chamber, than pull it again to eject the cartridge from the chamber. Continue this operation until all the cartridges have been ejected.

Always double check to make sure that the firearms are completely unloaded when you are not shooting.

DISASSEMBLY

Unload the gun. Put the manual safety "on". Pull the bolt handle fully to the back and lock the bolt backwards as in bolt open position. Unscrew the forend nut and remove it [Fig. 7]. Slide the forend and barrel toward the muzzle and remove it.



REMOVING AND DISASSEMBLING THE BOLT GROUP

REMOVING

After the barrel and forend are completely removed from the receiver. Push the carrier latch button by holding the bolt handle, and release it to the forward position. Take out the bolt handle by pulling it out [Fig. 8]. And pull the bolt assembly out of the receiver, sliding it along its guides [Fig. 9].

DISASSEMBLING

While holding the firing pin and firing pin spring in place, remove the firing pin retaining pin from the bolt assembly [Fig 10].

Remove the firing pin and firing pin spring from the bolt [Fig. 11]. Remove the locking head pin from the locking head. Pull the locking head from the bolt body [Fig. 12]. Remove the inertia spring from its seat in the bolt and drop it into your palm [Fig 13].



REMOVING AND REINSTALLING THE TRIGGER GROUP

REMOVING

Make sure that you removed the bolt group from the receiver. In order to remove the trigger group, push the receiver pin through the receiver and remove it by using an appropriate punch [Fig. 14]. While pushing the carrier latch button, push the trigger group forward and remove it [Fig. 15].

INSTALLING

After cleaning and lubricating the trigger group, it is reinstalled by pressing the carrier latch button while pushing the trigger group rearwards. Align the hole in the trigger group with the hole for the receiver pin, and reinstall the receiver pin.



ASSEMBLING AND INSTALLING THE TRIGGER GROUP

ASSEMBLING

Insert the inertia spring in its seats in the bolt [Fig. 16]. Insert the locking head into the bolt body [Fig. 17]. Insert the locking head pin in its hole onto the locking head's stem [Fig. 18]. Make sure that the reference line on the top of the locking head pin is visible and aligned with bolt's centerline. Insert the firing pin and the firing pin spring inside the bolt [Fig. 19].

Insert the firing pin retaining pin in its seat, in order to block the firing pin move out [Fig. 20].

INSTALLING

Insert the bolt assembly inside the receiver by sliding it along its guides. Make sure that the bolt link fits to the recoil spring cap.



REMOVING AND REINSTALLING THE CHOKE TUBES

Unload the gun and make sure that the safety is in "on" position. Remove your choke by inserting the choke key, and turning it counter clockwise. After cleaning and lubricating, a choke tube may be reinstalled by starting the threads by hand, than tightening the choke tube with choke key [Fig. 21]. Consult the choke value chart for suggested values.



REMOVING THE MAGAZINE PLUG

Since the hunting regulations in some countries and areas limit the number of cartridges allowed in the magazine, this shotgun comes with a limiter plug installed in the magazine tube that reduces the capacity of the magazine tube to two cartridges.

To remove this plug, follow the direction below. Unscrew and remove the forend nut. Remove the magazine plug from the end of the magazine tube [Fig. 22]. Replace the forend nut by screwing it into place.



CHANGING THE DROP (IF YOUR SHOTGUN INCLUDES)

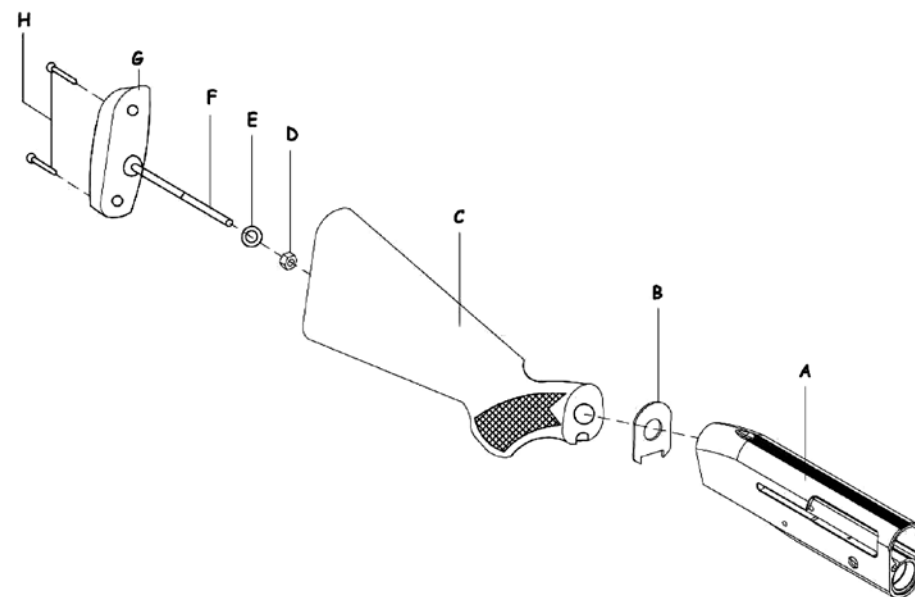
In order to accommodate all shooters needs; however, a Drop Change Kit is included as standard.

This kit provides drops of 50, 60, and 65 mm and consists of three drop adjustment shims. Each shim is marked with its corresponding drop measurement.

To accommodate left handed shooters, we have also included a left cast shim marked.

To change the drop, follow these instructions:

- Make sure the gun is unloaded as previously described.
- Using an ordinary Phillips or crosshead screwdriver, unscrew the butt plate screws (H) to remove the butt plate (G)
- To remove the stock: remove the retaining nut (D) using a 13 mm socket or hex spanner, remove the washer (E) and take off the stock. Now the stock may be removed.
- Insert the shim (B) corresponding to the desired drop through the recoil spring tube until the shim is flush with the receiver.
- Install the stock and insert the retaining nut (D) with its elastic washer (E)
- Tighten the stock retaining nut (D) using the socket or hex spanner.
- Install the butt plate (G) and insert the screws (H).



WARNING: After firing a few rounds, check again that the stock is well tightened. If necessary, remove the recoil pad and re-tighten the stock nut.

III. MAINTENANCE AND CLEANING

Proper maintenance is one of the most important facets in assuring the level best performance of the gun as well as the highest level of safety to the shooter.

- Before using the shotgun, make sure that barrel is clean and free of any grease or obstruction.
- After each shooting session, dismantle the barrel, the choke tube and the bolt mechanism for cleaning and lubricating.
- If the gun is used on a wet day, be sure to dry the gun and the wooden parts in a ventilated area.
- Do not store the gun in a gun case or gun slip if not perfectly dry.
- Storage of the gun in a plastic or synthetic case or slip for a long time is not suitable.

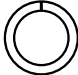


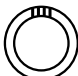
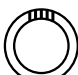
SPARE PARTS LIST

To order spare parts you must specify the model, the gauge and the serial number of your shotgun as well as the reference number of the spare parts found in the following tables.

WHAT IS A CHOKE?

The purpose of multi choke is to make barrels tip narrowed down to shoot more collectively or to enlarge barrels tip to shoot more wider pattern for small shots.

CHOKE TYPE AND AREAS USED

	Choke Type	Symbol	Game	Pellet Size	Useful Shooting Distance	
1	★ Full		Goose, Duck, Wood Grouse. For long range hunting with lead shot and tight groups	1-2-3	50 - 56 meters	WARNING: DO NOT use choke values 1, 2 or 3 with slugs, single projectiles. DO NOT use choke values 1 or 2 with steel shot.
2	★★ Improved Modified		Duck, Pheasant, Wood Grouse, Rabbit	4-5-6	41 - 44 meters	
3	★★★ Modified		Partridge, Pheasant, Quail, Pigeons, Woodcock. For long range hunting with lead shot and tight groups	5-6-7-8	31 - 41 meters	
4	★★★★ Improved Cylinder		Quail, Dove and target shooting. For shooter distance more open shooting	7-8-9 10-11-12	30 - 35 meters	
5	★★★★★ Skeet		For sporting clay and skeet shooting. Short distances more open shooting	7-8-9 10-11-12	20 - 30 meters	

WARNING

Never shoot steel shot with a full or improved modified choke. Use only modified, improved cylinder or cylinder chokes (marked three, four, five, cuts respectively).

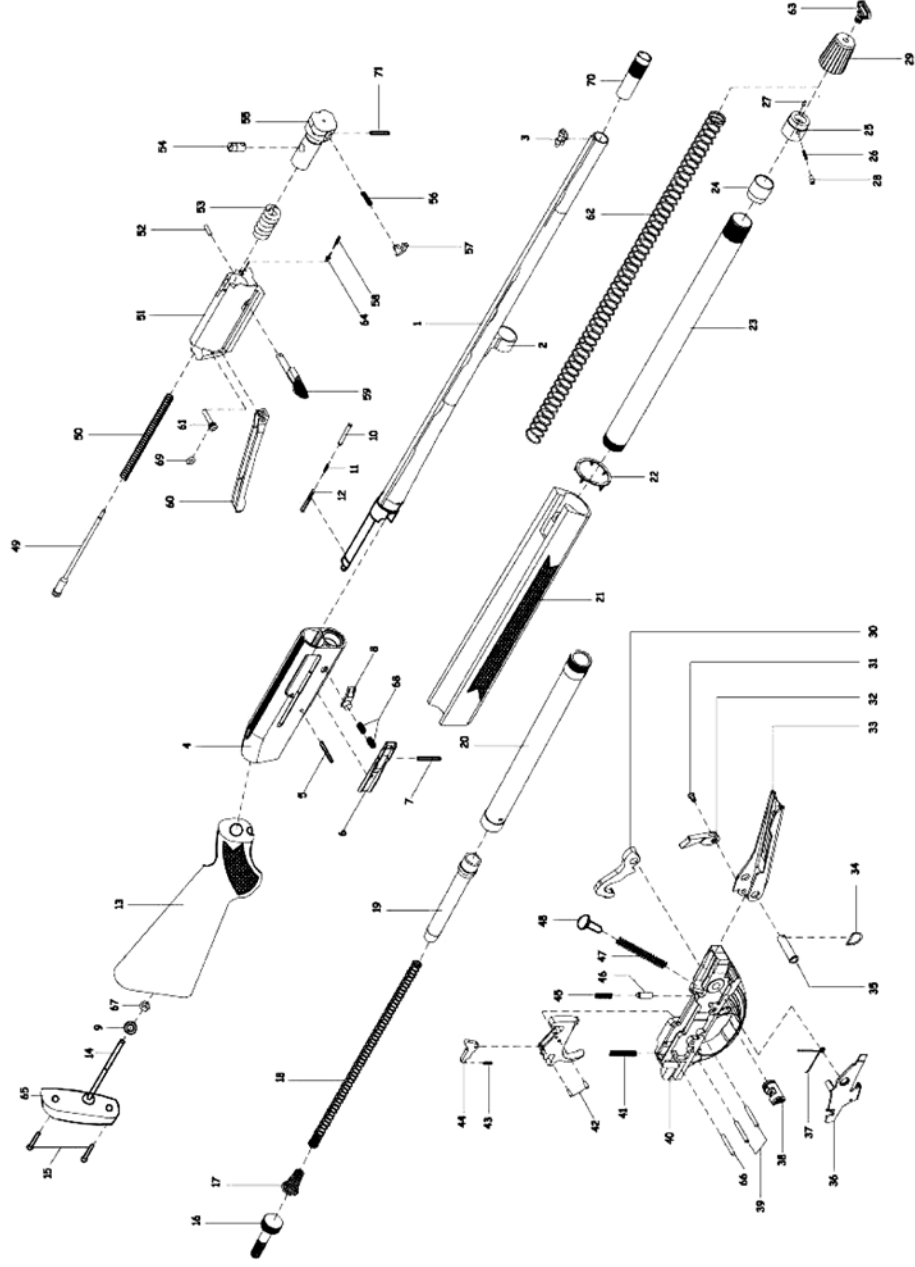
Never use cartridges with a case longer than the chamber, as this would have serious consequences for both the gun and the shooter.

Never shoot slugs with a full choke, use only the most open choke which is marked with five cuts

DO NOT use 3 1/2" cartridges (Supermagnums) in this shotgun.

Never shoot without the choke tube fitted in the barrel.

EXPLOSIVE VIEW



Parts List

1	Barrel
2	Barrel Ring
3	Front Sight
4	Receiver
5	Receiver Pin
6	Carrier Latch
7	Carrier Latch Pin
8	Carrier Latch Plate
9	Recoil Pad Screw Washer
10	Cartridge Ejector
11	Ejector Pin Spring
12	Ejector Pin
13	Stock
14	Stock Bolt
15	Stock Recoil Pad Screws
16	Stock Retaining Nut Screw
17	Rebounding Recoil Spring
18	Stock Tube Spring
19	Recoil Spring Plunger
20	Stock Tube
21	Forend
22	Forend Protection Insert
23	Magazine Tube
24	Magazine Follower (Short)

25	Magazine Follower (Long)
26	Magazine Follower Side Pin Spring
27	Forend Lock
28	Magazine Follower Side Pin
29	Magazin Cap
30	Hammer
31	Breech Bolt Latch Pin
32	Breech Bolt Latch
33	Carrier
34	Hammerbush Ring
35	Hammerbush
36	Cartridge Drop Lever
37	Cartridge Drop Lever Spring
38	Manual Safety Button
39	Trigger Pins
40	Trigger Guard
41	Trigger Spring
42	Disconnecter Pin
43	Disconnecter Spring
44	Disconnecter
45	Manual Safety Spring
46	Manual Safety Spring Pin
47	Hammer Spring
48	Hammer Spring Top Pin

49	Firing Pin
50	Firing Pin Spring
51	Bolt
52	Bolt Handle Pin
53	Bolt Inertia Spring
54	Locking Head Pin
55	Locking Head
56	Extractor Spring
57	Extractor
58	Bolt Handle Retaining Spring
59	Bolt Handle
60	Bolt Link
61	Bolt Link Pin
62	Magazine Spring
63	Sling Swivel
64	Bolt Handle Pin
65	Buttpad
66	Trigger Spring Pin
67	Stock Retaining Nut
68	Carrier Latch Plate Pin
69	Firing Pin O-Ring
70	Primo Mobile Choke
71	Extractor Pin

www.pallas-sports.com

mail@pallas-sports.com